

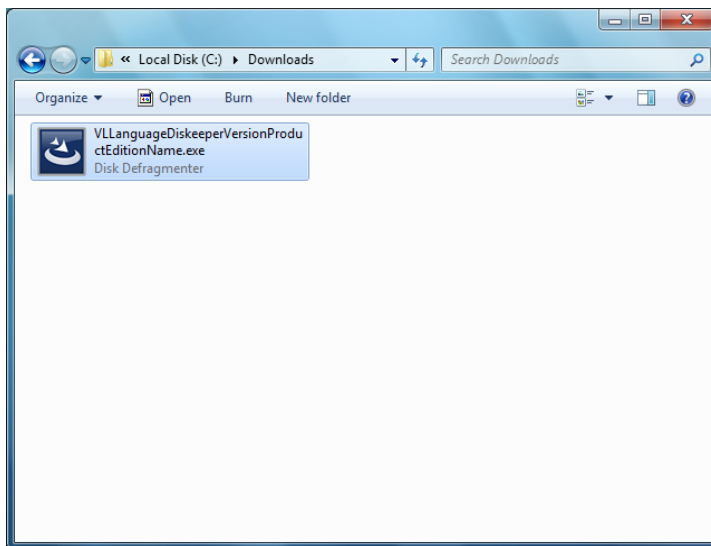
Installing Diskeeper on Your Network

Diskeeper® can be installed in a variety of ways. If you are installing Diskeeper onto a single computer, no special actions are needed. Simply double-click the Diskeeper installation file you downloaded on the target computer and complete the installation wizard steps.

If you are installing the software onto multiple computers in a network you have several options.

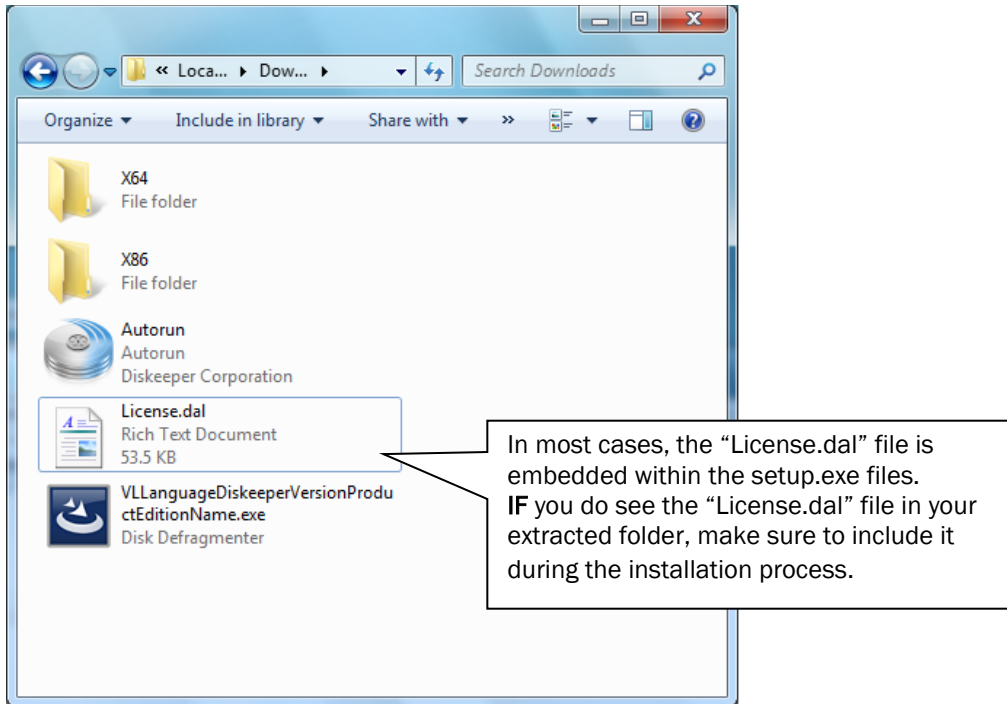
Option 1 - Using Diskeeper Administrator (Recommended)

1. First, install Diskeeper Administrator edition. If you do not already have Diskeeper Administrator, you can download a fully functional 45-day trialware from <http://www.conduSIV.com/downloads> and use the software, during the trial period, to quickly and easily deploy Diskeeper across your network. If you have more than 10-20 machines to which you plan to install software, Diskeeper Administrator will save you significant time.
2. After installing Diskeeper Administrator, return to the Diskeeper installation package file(s) you downloaded and double-click the *VLLanguageDiskeeperVersionProductEditionName.exe* file (this is a self-extracting file).



This will extract the Diskeeper software into the current folder, and if supported by the Diskeeper edition you are installing, subfolders will also be created and labeled **X86** (for Diskeeper running on Windows® 32-bit operating systems) and **X64** (for Diskeeper editions that natively support Windows 64-bit operating systems).

When the extraction process is complete, you will see something similar to this:



The extraction process also extracts an Autorun.exe program which can be ignored. (It is only used for local system installations.)

3. After the files have been extracted, the installation will automatically start. When you are prompted to click **Next** to install, do not continue the process. Instead, select the option to cancel the installation (unless you want to also install the software on the local system).



4. To install Diskeeper with Diskeeper Administrator, you also need product license files corresponding to the Diskeeper edition(s) you are installing. License files (License.dal) can be downloaded from the same web location where you downloaded the Diskeeper software.

Order Number: NFR-000296088

Company: All in one corporation

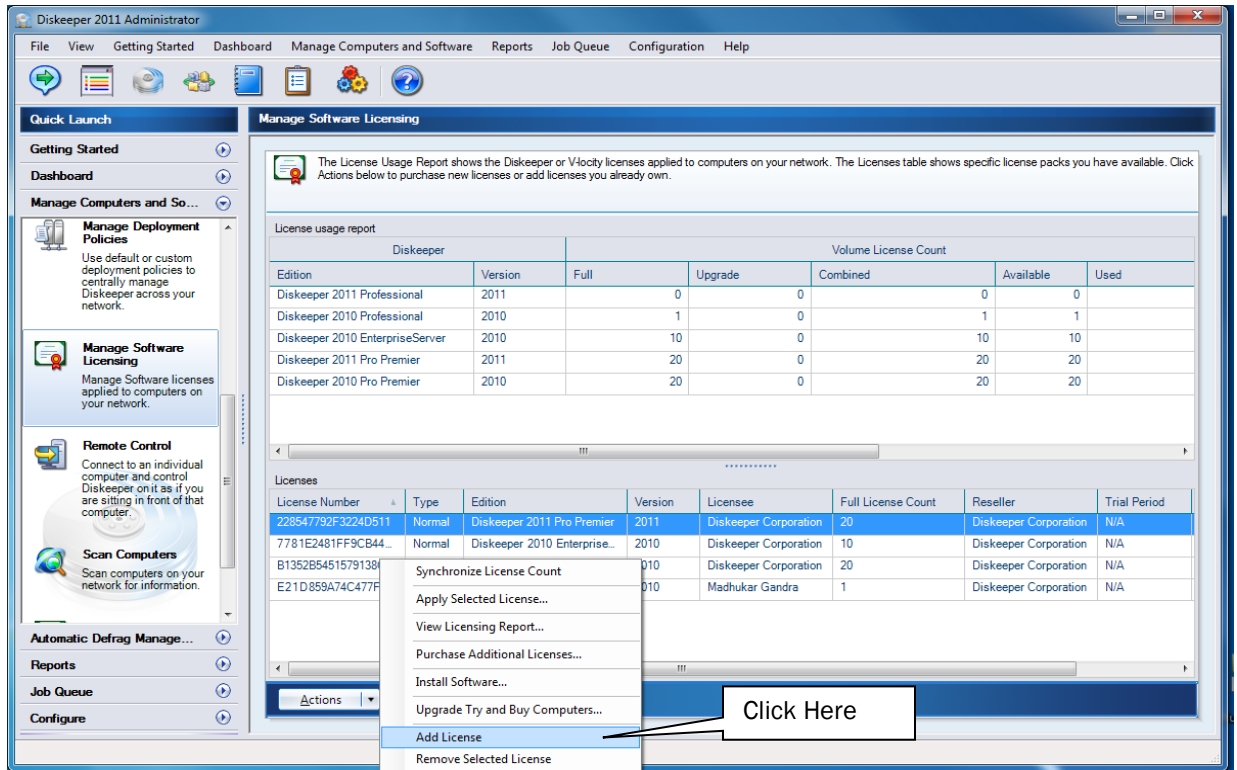
The following download(s) utilize our Download Manager to provide you with the products listed. When prompted, click "Run" then click "Run" to open the download manager. When the download manager opens, select a destination location and press "Save".

Items	Qty.	Click To Download
Diskeeper 2011 Professional	1	
Diskeeper 2011 Pro Premier	1	DOWNLOAD
Diskeeper 2011 Server	1	

Select the **Admin License** link, and when prompted, browse to the folder where you downloaded the Diskeeper installation package.

Note: You will need a separate License.dal file for each Diskeeper edition you are installing. These individual License.dal files must be saved in separate locations.

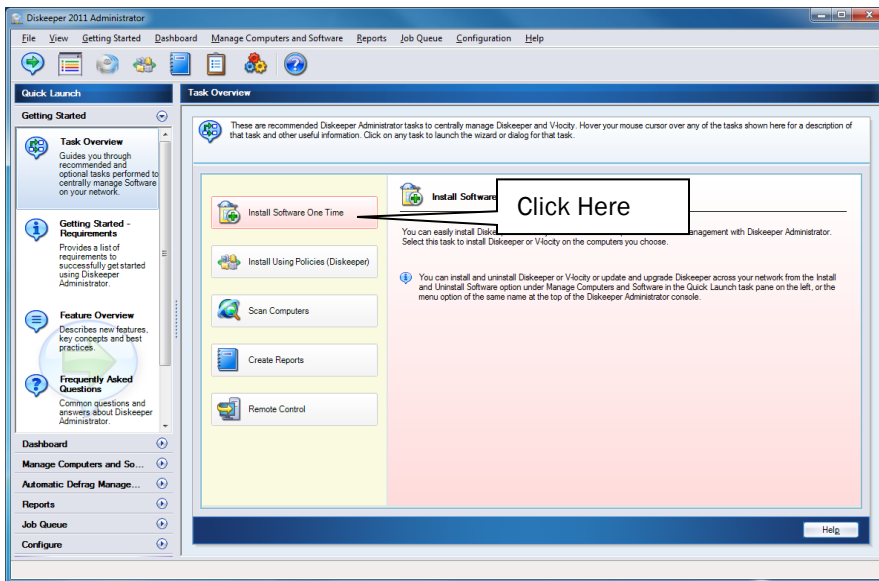
5. Launch Diskeeper Administrator and run the **Add License Files** wizard.



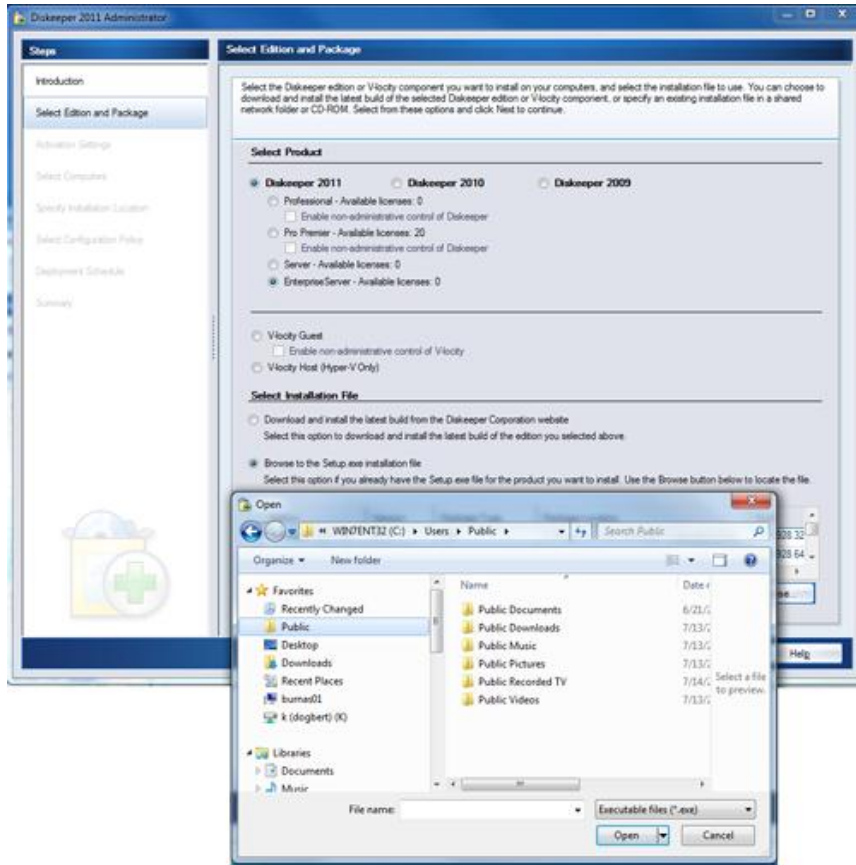
Browse to the License.dal file for each Diskeeper edition you plan to deploy. (These license files will be located in the folders you specified when you downloaded them.) The new License.dal file will update Diskeeper Administrator to the appropriate number of licenses for each edition, allowing you to then deploy Diskeeper across your network.

Note: To be able to browse to a folder on a remote machine, ensure the folder on the remote machine with the Diskeeper license and installation files is “shared”.

- Once your license files have been added to the Diskeeper Administrator database, run the Install wizard.



7. After selecting the Diskeeper edition, when prompted, browse to the respective **Setup.exe** file for that edition. (Keep in mind that you may possibly have X32 and X64 versions, so be sure to specify the correct one.)

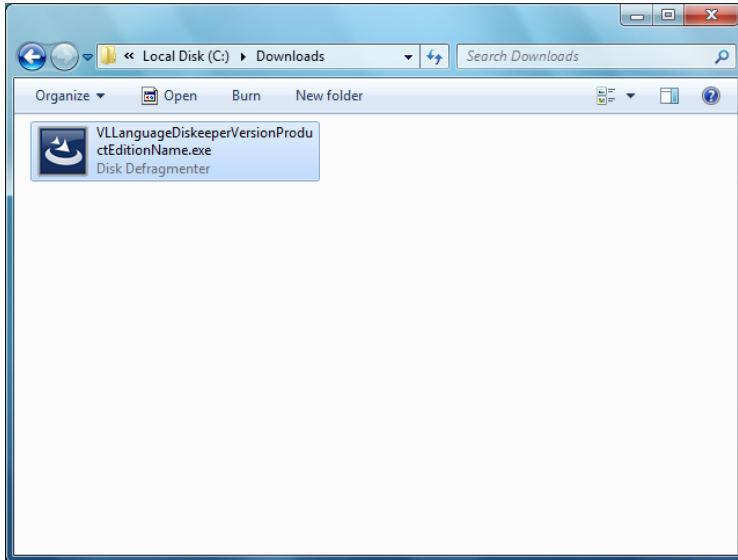


8. Continue the installation until complete.

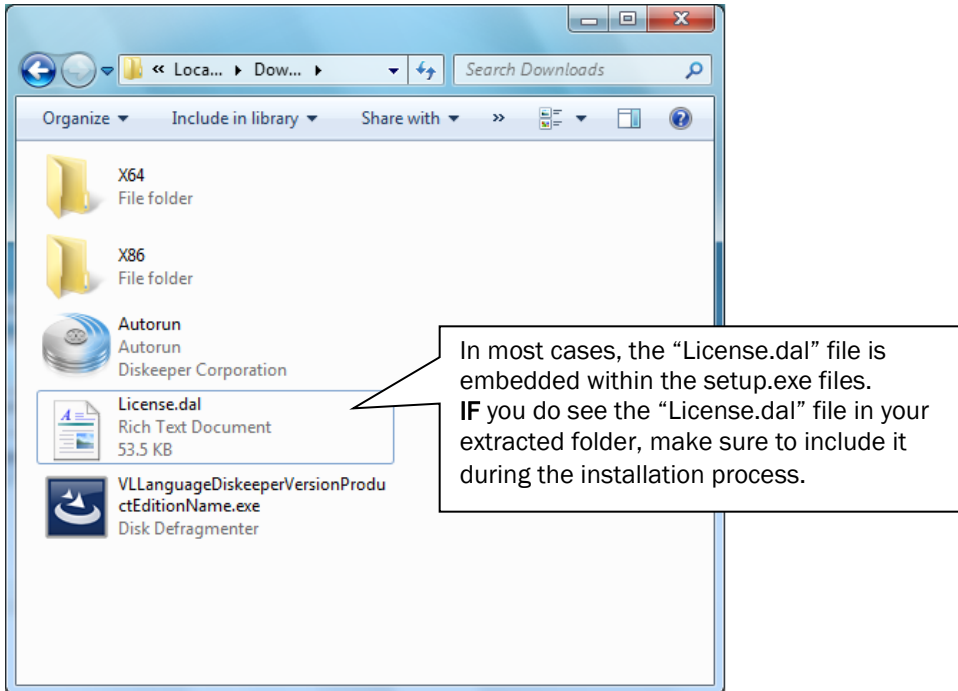
Option 2 - Using a network software distribution program to perform a silent installation using a command line

Most software distribution programs rely on access to a **Setup.exe** file. Follow these steps to extract the Setup.exe file necessary for installation with this type of tool:

1. Begin by double-clicking the *VLanguageVersionNameProductEditionName.exe* file that you downloaded (this is a self-extracting file).

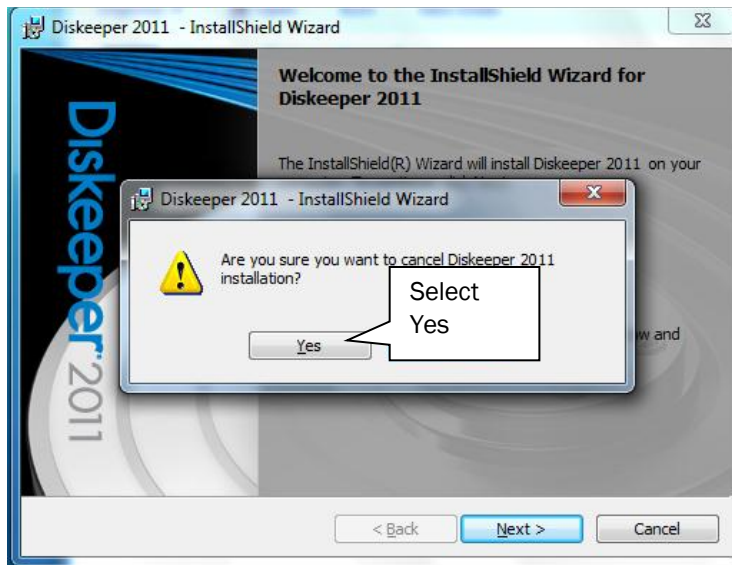


This will extract the Diskeeper software into the current folder, and if supported by the Diskeeper edition you are installing, subfolders will also be created and labeled **X86** (for Diskeeper running on Windows® 32-bit operating systems) and **X64** (for Diskeeper editions that natively support Windows 64-bit operating systems). When the extraction process is complete, you will see something similar to this:



2. After the files have been extracted, the installation will automatically start. When you are prompted to click **Next** to install, do not continue the process. Instead, select the option to cancel the installation (unless you want to also install the software on the local system).



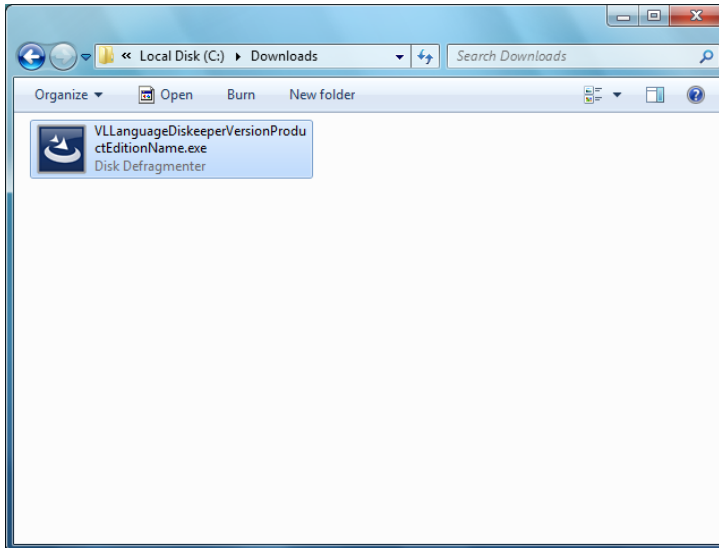


3. After canceling the installation, you will find a **Setup.exe** file in the **X86** or **X64** folders as appropriate for your installation. Use this Setup.exe file, along with any installation parameters needed, with your software distribution tool. See *How do I install Diskeeper remotely?* in the Diskeeper Help for a list of available installation parameters.

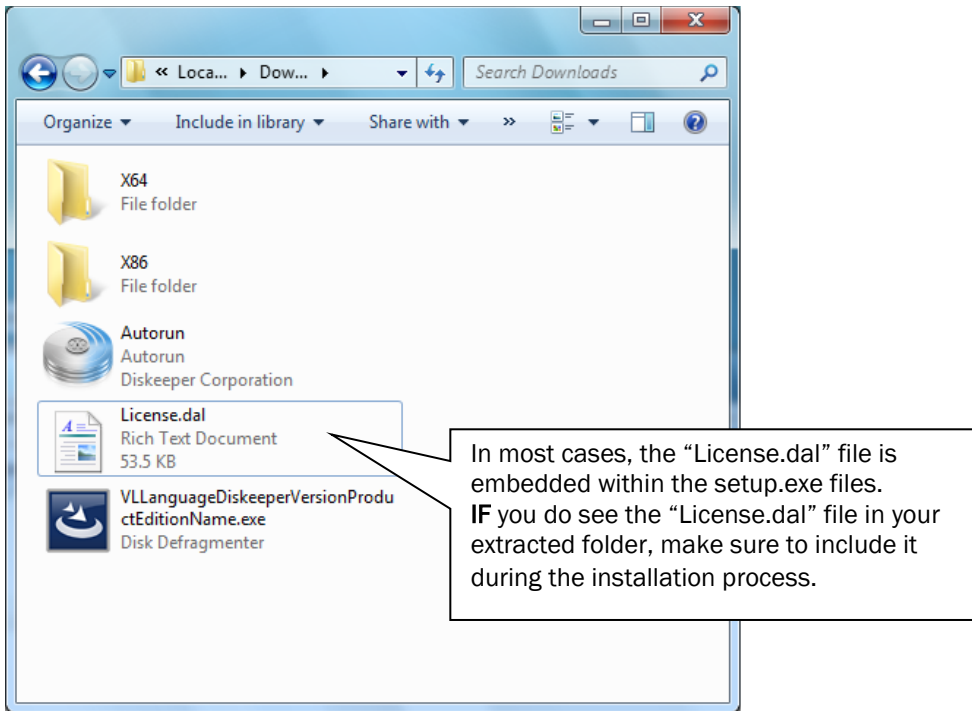
Option 3 - Creating an Administrative Install (e.g. for Active Directory® deployment).

Another installation option is to create an “administrative install” using a .msi (Microsoft® Installer) server image for installation. Follow these steps to create the .msi package for administrative installations:

1. Begin by double-clicking on the self-extracting file previously downloaded, *VLLanguageDiskeeperVersionNameProductEditionName.exe*.



This will extract the Diskeeper software into the current folder, and if supported by the Diskeeper edition you are installing, subfolders will also be created and labeled **X86** (for Diskeeper running on Windows® 32-bit operating systems) and **X64** (for Diskeeper editions that natively support Windows 64-bit operating systems). When the extraction process is complete, you will see something similar to this:



2. After the files have been extracted, the installation will automatically start. **When you are prompted to click Next to install, do not continue the process.** Instead, select the option to cancel the installation (unless you want to also install the software on the local system).



3. After canceling the installation, you will find a **Setup.exe** file in the **X86** or **X64** folders as appropriate for your installation. Use this file to create the **Diskeeper VersionNameProductEditionName.msi** file used for administrative installations by issuing this command at the Windows command prompt. **Note:** You must issue this command from the directory where the Setup.exe file resides, or include the path to the file in the command:

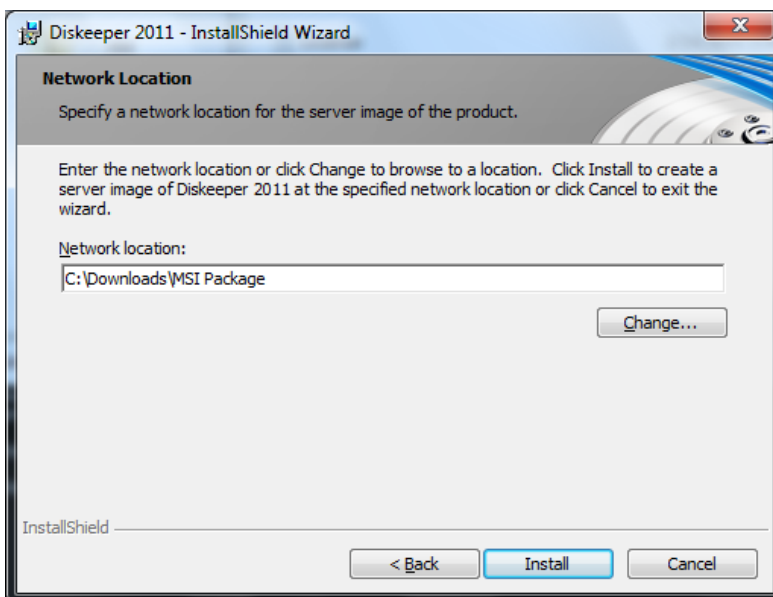
```
setup.exe /a
```

4. This command starts the creation of a server image of the Diskeeper installation. Click **Next** when the installation Welcome screen is displayed:

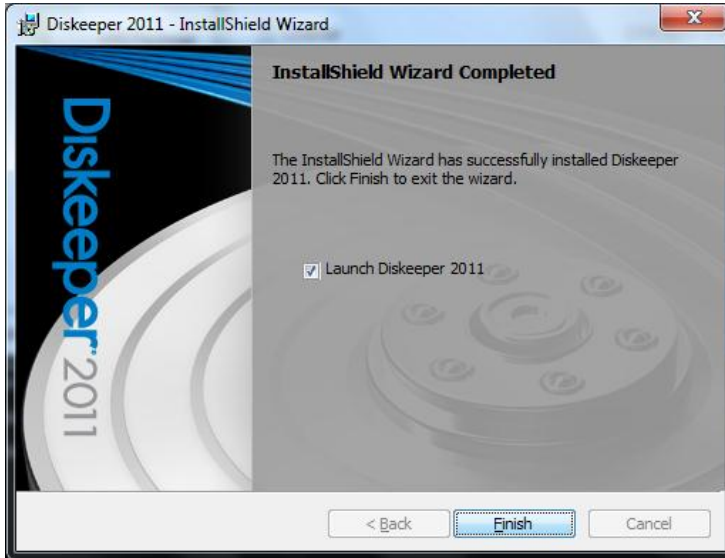


5. In the next window, click **Change** to specify the folder where you want the server image to be saved, and then click **Install**.

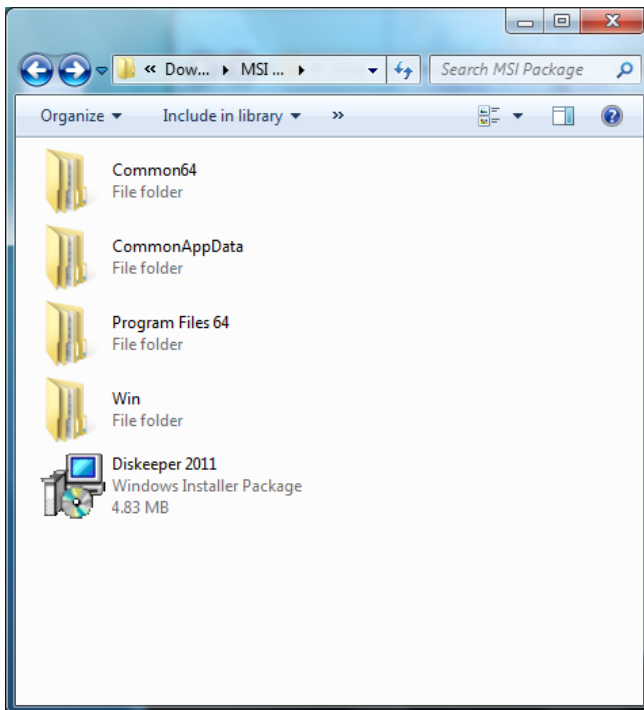
Note: The location you specify must be on a network share accessible to the computers on which you are installing Diskeeper.



- The final window confirms the operation is complete. Click **Finish** to close the window.



- After the server image has been created, the **DiskeeperProductEditionName.msi** file necessary for administrative installations will be in the location you specified in the earlier step.



8. Use any software installation routine to launch the **.msi** file as you normally would. Add the parameters of your choice. For example:

DiskeeperProductEditionName.msi /qn